

DISCOVER THE CYCLING TRAILS IN NOVI DI MODENA

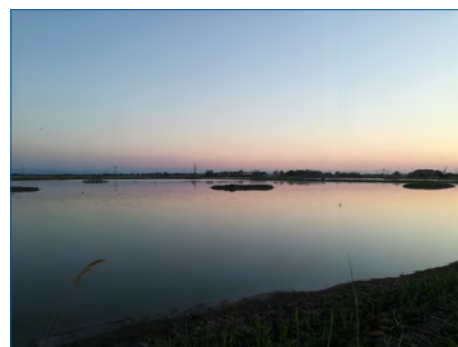
1

Red route The wetlands

↔ 16,2 km / ⌚ 1:10 hours / ♿ for everyone

This trail winds around to the south-east of the capital Novi di Modena, in an area featuring paddy fields and small artificial lakes used for intensive fish farming, angling and hunting of water birds. The “Laghetto Borsari” nature area is particularly important, as it is home to a colony of various species of heron with over 150 nests.

The trail skirts past the ancient hamlet of Gruppo and then heads towards Sant’Antonio in Mercadello, passing through the countryside and valleys. You can observe the wealth of local wildlife mainly in the early morning or towards the evening: so remember to bring your binoculars.



For more information:



GPS tracks / Info / Facilities
www.novinbici.it



Trail designed by:
**Circolo
Naturalistico
Novese**

